

<https://international.ipums.org/international>

Press <F5> key to start presentation

[Home](#) | [Select Data](#) | [FAQ](#) | [Contact](#) | [Login](#)

PROJECT

About IPUMS-I
How to Cite IPUMS-I
User Registration and Login

DATA

Browse and Select Data
Download Your Data Extract
GIS and Other Data Files
Analyze Data Online

SAMPLES

Sample Descriptions
Variance Estimation
Source Documents

RESOURCES

Bibliography
International Partners
Teaching with IPUMS

Integrated Public Use Microdata Series, International

census microdata for social and economic research

IPUMS-International is a project dedicated to collecting and distributing census data from around the world. Its goals are to:

- Collect and preserve data and documentation

IPUMSI News

NEW! Online tabulator
NEW! Class accounts
June 2012 data release
2011 award winners
Terra Populus funded
... All news items

MPC Data Projects

others

“Analyze data online”
If all you need are a few numbers,
a basic chart,
or some exploratory statistical analysis

ve News
est to
onal data
cers.



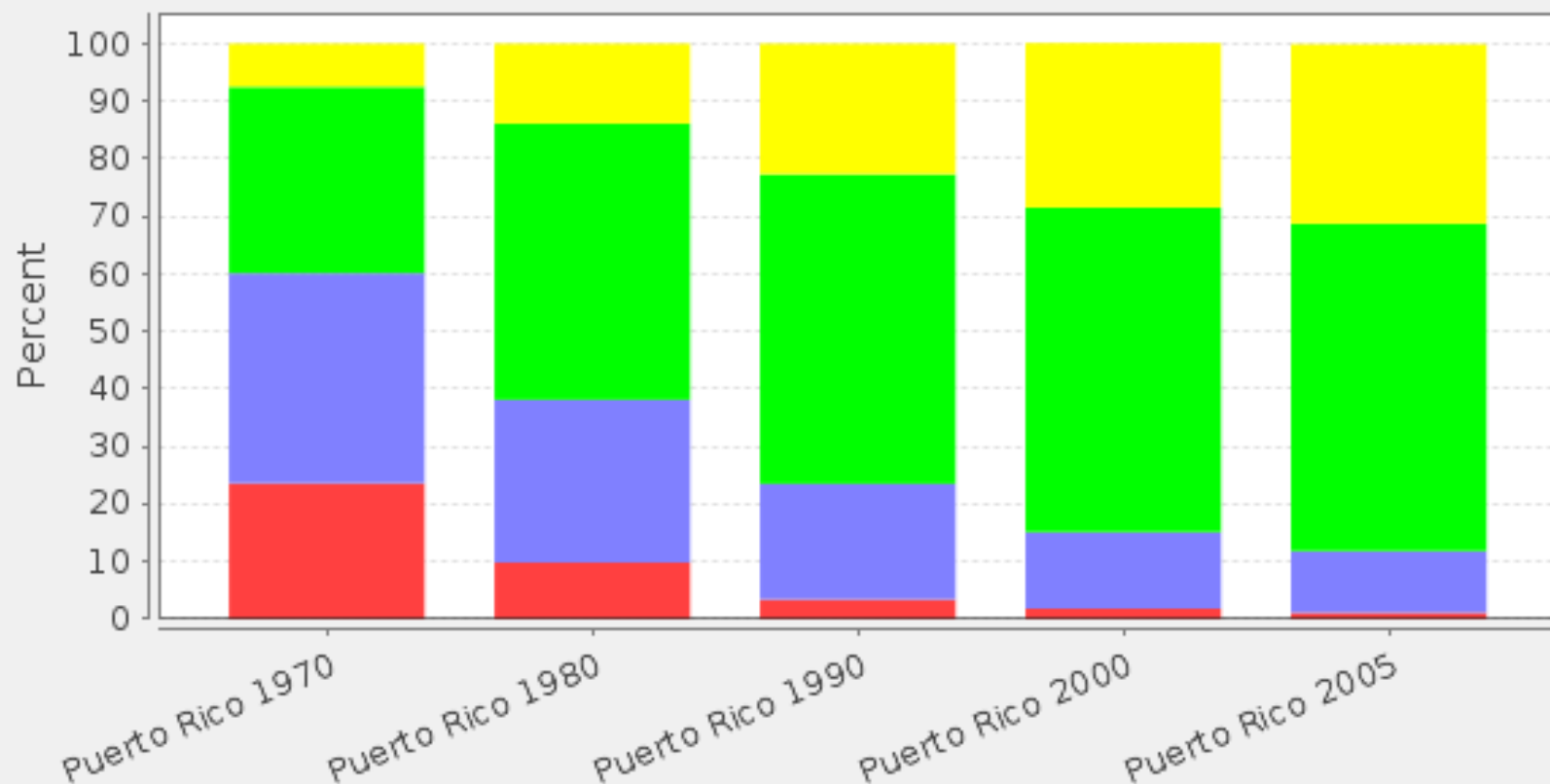
Example of using “Analyze Data Online”

- **5 steps to making a table of IPUMS microdata:**
 1. **Click “Analyze Data Online”**
 2. **Select samples**
 3. **Select statistical procedure**
 4. **Select Row/Col/Control/Filter using menus or keying the variable names**
 5. **Select options**
 6. **Add a title and press the “Run” button**
- **How to get metdata: codebook & more**
- **How to use statistical tools**

Example: Do this chart in <1 minute

Chart for sex = 2(Female)

Educational attainment, international recode BY IPUMS sample identifier



Less than primary completed Primary completed Secondary completed University completed


[Home](#) | [Select](#)

How can you do it?
1. click “Analyze Data Online”
2. click any year
For Puerto Rico, scroll down

PROJECT

[About IPUMS-I](#)
[How to Cite IPUMS-I](#)
[User Registration and Login](#)

DATA

[Browse and Select Data](#)
[Download Your Data Extract](#)
[GIS and Other Data Files](#)
[Analyze Data Online](#)

SAMPLES

[Sample Descriptions](#)
[Variance Estimation](#)
[Source Documents](#)

RESOURCES

[Bibliography](#)
[International Partners](#)
[Teaching with IPUMS](#)

IPUMS Online Data Analysis System

The IPUMS online analysis system uses high-speed tabulation software developed at UC-Berkeley's [Computer-assisted Survey Methods Program](#).

Click on any of the links below to get started. See the [instructions](#) page for information on using the system.

NOTE: The statistics produced by the online analysis system are derived from sample data. They may not match official published statistics.

Single-Sample Datasets

Argentina	2001	1991	1980	1970	
Armenia	2001				
Austria	2001	1991	1981	1971	
Belarus	1999				
Bolivia	2001	1992	1976		
Brazil	2000	1991	1980	1970	1960
Cambodia	2008	1998			
Canada	2001	1991	1981	1971	

**For a full
series of
samples:**

**scroll down
more,**

**then click
a range of
years.**

**For a world
region (e.g.,
Latin America)
scroll down
even more!**

Multi-Sample Datasets

Include the *year* variable when using datasets that contain multiple samples for a country, such as "Argentina 1970-2001". Include the *sample* variable when using regional datasets, such as "Africa 1982-Present".

Argentina	1970-2001	Austria	1971-2001
Bolivia	1976-2001	Brazil	1960-2000
Cambodia	1998-2008	Canada	1971-2001
Chile	1960-2002	China	1982-1990
Colombia	1964-2005	Costa Rica	1963-2000
Ecuador	1962-2001	Egypt	1996-2006
El Salvador	1992-2007	France	1962-2006
Germany	1970-1987	Greece	1971-2001
Guinea	1983-1996	Hungary	1970-2001
India	1983-2004	Indonesia	1971-2010
Ireland	1971-2006	Israel	1972-1995
Jamaica	1982-2001	Kenya	1989-1999
Malawi	1987-2008	Malaysia	1970-2000
Mali	1987-1998	Mexico	1960-2010
Mongolia	1989-2000	Morocco	1982-2004
Netherlands	1960-2001	Nicaragua	1971-2005
Pakistan	1973-1998	Palestine	1997-2007
Panama	1960-2000	Peru	1993-2007
Phillippines	1990-2000	Portugal	1981-2001
Puerto Rico	1970-2005	Romania	1977-2002
Rwanda	1991-2002	Saint Lucia	1980-1991
Senegal	1988-2002	South Africa	1996-2007
Spain	1981-2001	Switzerland	1970-2000

3. “Hover over” Analysis and select “Frequencies and Cross-tabulations”

SPSS [Use classic interface] Selected Study: Puerto Rico 1910-2011

Analysis	Create Variables	Download	Codebook	Getting Started
Frequencies or crosstabulation	Comparison of means	Correlation matrix	Comparison of correlations	Multiple regression
			Logit/Probit regression	List values of individual cases

Variable Selection: [Help](#)

Selected: educ

Copy to:

Mode: ☐ Append ☒ Replace

- Person - Demographic
- Person - Race, Ethnicity, and Nativity
- Person - Health Insurance
- Person - Education
 - school - School attendance
 - higrade - Highest grade of schooling
 - higraded - Highest grade of schooling
 - educ - Educational attainment
 - educd - Educational attainment
 - gradeatt - Grade level attending
 - gradeattd - Grade level attending
 - schltype - Public or private school
 - degfield - Field of degree
 - degfieldd - Field of degree
 - degfield2 - Field of degree (2)
 - degfield2d - Field of degree (2)
 - schlvoc - Vocational training
 - lit - Literacy
- Person - Work
- Person - Income
- Person - Occupational Standing
- Person - Migration

Row: educ

Column: year

Control:

Selection Filter(s): Example: age(18-50)

Weight: perwt - Person weight

TABLE OPTIONS

Percentaging:

☒ Column ☐ Row ☐ Total

☐ **Confidence intervals** Level: 95 percent

☐ **Standard error of each percent**

N of cases to display:

☐ Unweighted ☒ Weighted

☐ **Summary statistics**

☐ **Question text** ☐ **Suppress table**

☒ **Color coding** ☐ **Show Z-statistic**

☐ **Include missing-data values**

CHART OPTIONS

Type of chart: Stacked Bar Chart

Bar chart options:

Orientation: ☒ Vertical ☐ Horizontal

Visual Effects: ☒ 2-D ☐ 3-D

Show percents: ☐ Yes

Palette: ☒ Color ☐ Grayscale

Size - width: 600 height: 400

Title:

Change number of decimal places to display

For percents and confidence intervals: 1

For std. errors (relative to percents): +1

4. Make table

a. Row: “edattan” (key or select from menu on left).

b. Column: “sample” [year].

SD. c. Control: “sex”.

d. Filter(s): age (25-34).

Variable Selection: [Help](#)

Selected: age

Copy to:

Mode: ☐ Append ☒ Replace

REQUIRED Variable names to specify

Row: edattan

OPTIONAL Variable names to specify

Column: sample

Control: sex

Selection Filter(s): age(25-34) *Example: age(18-50)*

Weight: wtper - Person weight

TABLE OPTIONS

Percentaging:

☒ Column ☐ Row ☐ Total

☐ [Confidence intervals](#) Level: 95 percent

☐ [Standard error of each percent](#)

N of cases to display:

☐ Unweighted ☒ Weighted

☐ [Summary statistics](#)

☐ [Question text](#) ☐ [Suppress table](#)

☒ [Color coding](#) ☐ [Show Z-statistic](#)

☐ [Include missing-data values](#)

CHART OPTIONS

Type of chart: Stacked Bar Chart

Bar chart options:

Orientation: ☒ Vertical ☐ Horizontal

Visual Effects: ☒ 2-D ☐ 3-D

Show percents: ☐ Yes

Palette: ☒ Color ☐ Grayscale

Size - width: 600 height: 400

Variable Selection:

- Household - Constructed Household
- Person - Technical
- Person - Constructed Family Interrelationship
- Person - Demographic
 - relate - Relationship to household head
 - related - Relationship to household head
 - age - Age
 - age2 - Age, grouped into intervals
 - sex - Sex
 - marst - Marital status
 - marstd - Marital status
 - consens - Consensual union
- Person - Fertility and Mortality
- Person - Nativity and Birthplace
- Person - Ethnicity and Language
- Person - Education
 - school - School attendance
 - lit - Literacy
 - edattan - Educational attainment, international recode
 - edattand - Educational attainment, international recode

5. Select options

a. Percentaging

b. Summary statistics

SD
c. Type of chart

d. Weighting, etc.

Variable Selection: [Help](#)

Selected:

Copy to:

Mode: ☐ Append ☒ Replace

- Household - Constructed Household
- Person - Technical
- Person - Constructed Family Interrelationship
- Person - Demographic
 - relate - Relationship to household head
 - related - Relationship to household head
 - age - Age
 - age2 - Age, grouped into intervals
 - sex - Sex
 - marst - Marital status
 - marstd - Marital status
 - consens - Consensual union
- Person - Fertility and Mortality
- Person - Nativity and Birthplace
- Person - Ethnicity and Language
- Person - Education
 - school - School attendance
 - lit - Literacy
 - edattan - Educational attainment, international recode
 - edattand - Educational attainment, international recode

SDA Frequencies/Crosstabulation Program

Help: [General](#) / [Recoding Variables](#)

REQUIRED Variable names to specify

Row:

OPTIONAL Variable names to specify

Column:

Control:

Selection Filter(s): Example: age(18-50)

Weight:

TABLE OPTIONS

Percentaging:

☒ Column ☐ Row ☐ Total

☐ Confidence intervals Level:

☐ Standard error of each percent

N of cases to display:

☐ Unweighted ☒ Weighted

☐ Summary statistics

☐ Question text ☐ Suppress table

☒ Color coding ☐ Show Z-statistic

☐ Include missing-data values

CHART OPTIONS

Type of chart:

Bar chart options:

Orientation: ☒ Vertical ☐ Horizontal

Visual Effects: ☒ 2-D ☐ 3-D

Show percents: ☐ Yes

Palette: ☒ Color ☐ Grayscale

Size: - width: height:

6. Run the table (or select more options first)

a. Title

b. Decimals

c. Colors, etc.

SDA

A

Variable Selection: [Help](#)

Selected: educ View

Copy to: Row Col Ctrl Filter

Mode: ☐ Append ☒ Replace

- Person - Demographic
- Person - Race, Ethnicity, and Nativity
- Person - Health Insurance
- Person - Education
 - school - School attendance
 - higrade - Highest grade of schooling
 - higraded - Highest grade of schooling
 - educ - Educational attainment
 - educd - Educational attainment
 - gradeatt - Grade level attending
 - gradeattd - Grade level attending
 - schltype - Public or private school
 - degfield - Field of degree
 - degfieldd - Field of degree
 - degfield2 - Field of degree (2)
 - degfield2d - Field of degree (2)
 - schlvoc - Vocational training
 - lit - Literacy
- Person - Work
- Person - Income
- Person - Occupational Standing
- Person - Migration

Selection Filter(s):

Example: age(18-50)

Weight: perwt - Person weight

TABLE OPTIONS

Percentaging:

- ☒ Column ☐ Row ☐ Total
☐ Confidence intervals Level: 95 percent
☐ Standard error of each percent

N of cases to display:

- ☐ Unweighted ☒ Weighted

- ☐ Summary statistics
☐ Question text ☐ Suppress table
☒ Color coding ☐ Show Z-statistic
☐ Include missing-data values

CHART OPTIONS

Type of chart: Stacked Bar Chart

Bar chart options:

Orientation: ☒ Vertical ☐ Horizontal
Visual Effects: ☒ 2-D ☐ 3-D

Show percents: ☐ Yes

Palette: ☒ Color ☐ Grayscale

Size - width: 600 height: 400

Title: Puerto Rico: Educational attainment by gender ages 25-34, 1970-2005

Run the Table Clear Fields

Change number of decimal places to display

For percents and confidence intervals: 1

For std. errors (relative to percents): +1

For DEFT: +3

For weighted N's: 1

For summary statistics and Z-statistic: 2

4 seconds later*, the results:

Works on a smartphone—but the small screen is a challenge!

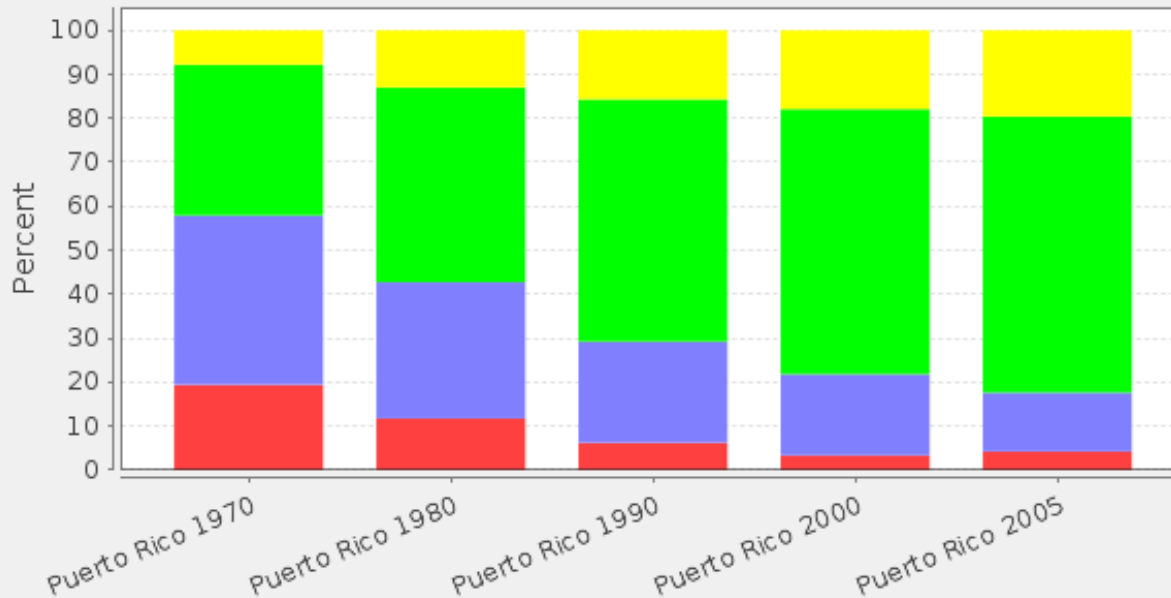
Puerto Ricans in Puerto Rico: Educational attainment by gender ages 25-34						
SDA 3.5: Tables						
Puerto Rico 1970-2005						
May 04, 2013 (Sat 07:15 PM CDT)						
Variables						
Role	Name	Label	Range	MD	Dataset	
Row	edattan	Educational attainment, international recode	0-4		1	
Column	sample	IPUMS sample identifier	6301-6305		1	
Control	sex	Sex	1-2		1	
Weight	wtper	Person weight	.00-717.00		1	
Filter	age(25-34)	Age	0-100		1	
Statistics for sex = 1(Male)						
Cells contain: -Column percent -Weighted N		sample				
		6301 Puerto Rico 1970	6302 Puerto Rico 1980	6303 Puerto Rico 1990	6304 Puerto Rico 2000	6305 Puerto Rico 2005
						ROW TOTAL
1: Less than primary completed		19.4 30,600.0	11.7 25,340.0	6.2 15,168.0	3.3 8,494.0	4.2 10,883.0
2: Primary completed		38.5 60,000.0	31.0 67,500.0	23.0 56,240.0	18.5 47,054.0	13.4 34,060.0

**Puerto Rican
males ages
25-34:
less than
primary -
1970 19.4%
1980 11.7
1990 6.2
2000 3.3
2005 4.2
(scroll down
for more,
including the
teaser chart)**

The chart (stacked bar—not photoshopped)

Chart for sex = 1(Male)

Educational attainment, international recode BY IPUMS sample identifier



Note the revolution in education over the past 35 years.

Now 80% graduate high school, and 20% college—twice 1970s rates...

Statistics for sex = 2(Female)

Cells contain:
Column percent

sample			
6301 Puerto	6302 Puerto	6303 Puerto	6304 Puerto

Need Metadata?

Click "Codebook" for simple categories

Need more: open a tab and go to IPUMS

SDA [\[Use classic interface\]](#) Selected Study: **Puerto Rico 1910-2011**

Analysis Create Variables Download **Codebook** Getting Started

Variable Selection: [Help](#)

Selected:

Copy to:

Mode: ☐ Append ☒ Replace

- Person - Demographic
- Person - Race, Ethnicity, and Nativity
- Person - Health Insurance
- Person - Education
 - school - School attendance
 - higrade - Highest grade of schooling
 - higraded - Highest grade of schooling
 - educ - Educational attainment
 - educd - Educational attainment
 - gradeatt - Grade level attending
 - gradeattd - Grade level attending
 - schltype - Public or private school
 - degfield - Field of degree
 - degfieldd - Field of degree
 - degfield2 - Field of degree (2)
 - degfield2d - Field of degree (2)
 - schlvoc - Vocational training
 - lit - Literacy
- Person - Work
- Person - Income
- Person - Occupational Standing
- Person - Migration

SDA Frequencies/Crosstabulation Program
Help: [General](#) / [Recoding Variables](#)

REQUIRED Variable names to specify

Row:

OPTIONAL Variable names to specify

Column:

Control:

Selection Filter(s): Example: age(18-50)

Weight:

TABLE OPTIONS

Percentaging:

☒ Column ☐ Row ☐ Total

☐ Confidence intervals Level:

☐ Standard error of each percent

N of cases to display:

☐ Unweighted ☒ Weighted

☐ Summary statistics

☐ Question text ☐ Suppress table

☒ Color coding ☐ Show Z-statistic

☐ Include missing-data values

CHART OPTIONS

Type of chart:

Bar chart options:

Orientation: ☒ Vertical ☐ Horizontal

Visual Effects: ☒ 2-D ☐ 3-D

Show percents: ☐ Yes

Palette: ☒ Color ☐ Grayscale

Size - width: height:

Title:

Click “Getting Started” for more instructions
Take time to explore...
The tool is so fast, that experimenting is easy.

SDA [\[Use classic interface\]](#)

Selected Study: **Puerto Rico 1970-2011**

Analysis

Create Variables

Download

Codebook

Getting Started

Variable Selection: [Help](#)

Selected:

Copy to:

Mode: ☐ Append ☒ Replace

- Person - Demographic
- Person - Race, Ethnicity, and Nativity
- Person - Health Insurance
- Person - Education
 - school - School attendance
 - higrade - Highest grade of schooling
 - higraded - Highest grade of schooling
 - educ - Educational attainment
 - educd - Educational attainment
 - gradeatt - Grade level attending
 - gradeattd - Grade level attending
 - schtype - Public or private school
 - degfield - Field of degree
 - degfieldd - Field of degree
 - degfield2 - Field of degree (2)
 - degfield2d - Field of degree (2)
 - schlvoc - Vocational training
 - lit - Literacy
- Person - Work
- Person - Income
- Person - Occupational Standing
- Person - Migration

SDA Frequencies/Crosstabulation Program

Help: [General](#) / [Recoding Variables](#)

REQUIRED Variable names to specify

Row:

OPTIONAL Variable names to specify

Column:

Control:

Selection Filter(s): Example: age(18-50)

Weight:

TABLE OPTIONS

Percentaging:

☒ Column ☐ Row ☐ Total

☐ Confidence intervals Level:

☐ Standard error of each percent

N of cases to display:

☐ Unweighted ☒ Weighted

☐ Summary statistics

☐ Question text ☐ Suppress table

☒ Color coding ☐ Show Z-statistic

☐ Include missing-data values

CHART OPTIONS

Type of chart:

Bar chart options:

Orientation: ☒ Vertical ☐ Horizontal

Visual Effects: ☒ 2-D ☐ 3-D

Show percents: ☐ Yes

Palette: ☒ Color ☐ Grayscale

Size - width: height:

Title: